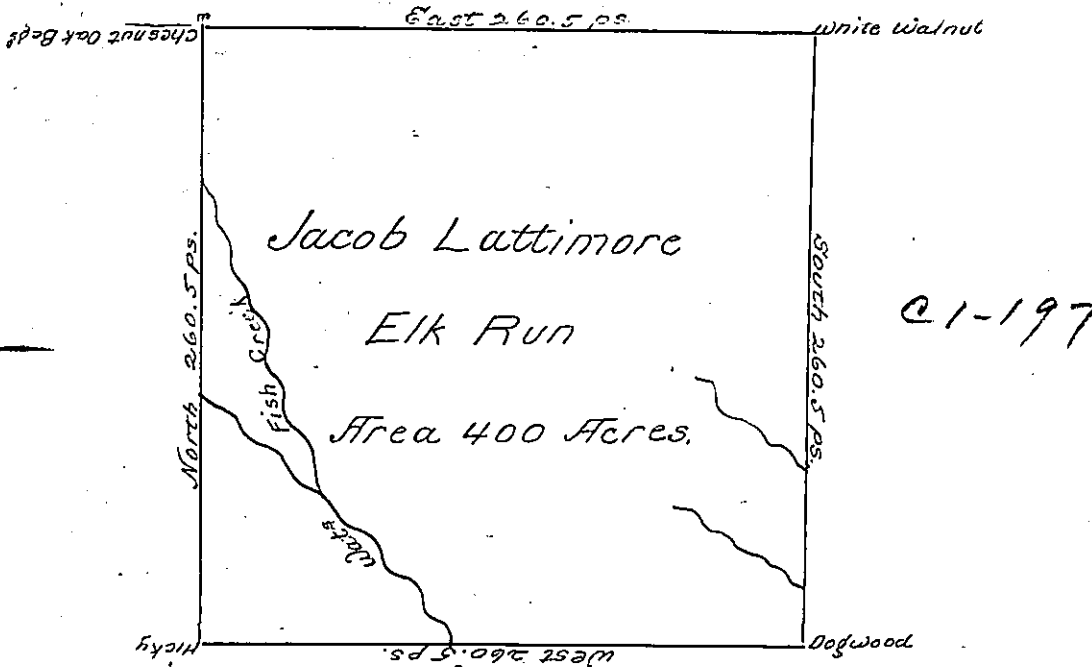


Adj. Edward Shingle
41.9



274-242

Adj. James Lovemore

The above is a Draught of a Survey made the 14th day of Febr. 1785 in pursuance of Warrent granted to Jacob Lattimore dated the 25th day of Octr. 1784 Situated on a Branch Fish Creek in Washington County called Elk Run contain four hundred Acres with usual allowance of 6 percent for Roads

To John Lukens Esqr. Surv. Genl.
Jno. Hoge Esq.

IN TESTIMONY that the above is a copy of the original remaining on file in the Department of Internal Affairs of Pennsylvania, made conformably to an Act of Assembly approved the 16th day of February, 1833, I have hereunto set my Hand and caused the Seal of said Department to be affixed at Harrisburg, this second day of July 1901

James W. Latta
Secretary of Internal Affairs.